

ST REGIS ACADEMY

NEWSLETTER

14th June 2024



YEAR 7 – IFEOLUWAPO

YEAR 8 – AYODAMOLA

YEAR 9 – ROHIN

YEAR 10 – AYODELE

YEAR 12 – PHOEBE

CHESTER – TREVOR

LICHFIELD –

IFEOLUWAPO

WORCESTER – STELLA

HOUSE OF THE WEEK

IS LICHFIELD!



MESSAGE FROM MR PARRY

This week we were honoured to host the Lord Bishop of Lichfield OBE, Michale Ipgrave, as part of a celebration event to mark the completion of the major roof works that have been taking place at St Regis this year. Starting in July 2023, the multi-million pound project has seen a completely new roof installed. This future proofs the school and makes it possible for new internal developments and improvements to take place in the future. The event also marked the official opening of the Academy as St Regis, although this has been our title from September.

The Bishop was joined by members from the Lichfield Diocese; Wolverhampton Local Authority; Three Spires Trust and the Academy's Committee, as well as representatives from the main companies involved in the project: Concept, Mantons, Brindley Asphalt and IKO roofing. It was a pleasure to also have a Year 10 perform some fantastic music, and for some Year 8 students to lead a blessing service that took place up on the roof. It was a wonderful occasion and as part of the event our guests toured the school and saw first hand the amazing work that takes place at our Academy day-in, day-out.

We have some exciting opportunities taking place for our students in the remaining weeks of term: Year 12 residential visit to the Eden Project, passing the Wolverhampton school's Olympic torch baton, a Careers visit to NEC, Year 7, 8 and 9 residential visit to Kingswood outdoor centre, Year 11 Prom, Year 8 Big Bang science fayre, Year 13 trip to Alton Towers, Year 7 Gurdwara visits, End of year Reward trips and our end of year showcase, Oliver! Lots to look forward to.



St Regis Duke of Edinburgh Expedition

On Friday 7th June 52 students started their assessed Bronze Duke of Edinburgh expedition. The students were an absolute credit to the school! They got lost, they fell out and they worked hard... but they smiled throughout the whole experience.

Each and every student involved should be very proud of themselves, walking for over 12 hours in 2 days and carrying a lot of weight with them. The evening camp was a lot of fun, students cooked with each other and set their tents up, they had very little sleep through their excitement, however, this didn't stop them from waking up the next day with positivity & excitement!

We are very proud of the students involved and are very excited to see how many of them continue to complete their Silver Award next year.



LAUNCHING 20TH JUNE 2024 THREE SPIRES SIXTH FORM

COMPTON CAMPUS

TETTENHALL CAMPUS

“A unique partnership delivering exciting opportunities students won't find anywhere else...”



Mr Phillips, Mr Farmer and Mrs Mould



The technology team visited the Training Workshop in Stockport to complete our Wood Lathe training. Mick who is a really experienced former carpenter went through all aspects of using a lathe and the project we were going to be working on to complete our training. We used various tools such as a Skew chisel, roughing gouge, parting tool, shear scraper and many more to make our very own bowls. The team got competitive and each of us designed our bowls and finished them with a nice coat of wax to outshine the others before leaving excited to introduce our own new Wood Lathe to our curriculum, upskilling our students with staff from other areas of the school interested to have a go too!



On Thursday 13th June, we hosted Governors, contractors, Trustees, members of the Diocese of Lichfield, other important stakeholders and Local Authority in to commemorate the major roof project completion!



SPOTLIGHT ON SAFEGUARDING



Working together to keep our young people safe

Secondary | June 2024

Algorithms: Understanding Their Role in Social Media

Algorithms play a crucial role in organising content, ranking search outcomes and displaying advertisements on the internet, especially on social media. They are primarily used to arrange content in a user's feed. Given the vast amount of content accessible, social platforms use algorithms to prioritise content they believe will appeal to a user, based on what they have liked, commented on, watched and shared.

Algorithms can have negative impacts on young individuals. They operate on the assumption that any interaction with content indicates a desire for similar information. Consequently, if a young person views inappropriate material, they may receive more of such content. Over time, this content may escalate in inappropriateness, potentially exposing children to extremely harmful material.

In this month's issue:

- Algorithms
- Edibles
- App focus: Reddit

How to support your child with the negative impact of algorithms

- 1 Social media limits**
Stepping away from social media and engaging in offline activities can enhance moods.
- 2 Curate feeds**
Exploring diverse content and following accounts that share positive content can help create a more uplifting social media environment.
- 3 Notice reactions**
Assisting your child in identifying content that triggers negative feelings and fostering healthy habits of disconnection can help disrupt the cycle of negative emotions.



4 WAYS ALGORITHMS CAN NEGATIVELY IMPACT CHILDREN AND YOUNG PEOPLE

1



Mental health

Excessive engagement with negative content can increase anxiety and depression.

2

Misinformation and echo chambers

Young people may encounter misinformation and hate speech due to user-generated content in their feed, limiting exposure to diverse opinions and reinforcing existing views.



3

Body image and self-esteem

Social media promotes unrealistic beauty standards. The constant exposure to such content can negatively impact the self-esteem of young people who aspire to meet these standards.



4

Inappropriate content

It is very easy to come across content which is not age appropriate. This can be of a sexual nature, violent, sexist and racist.



Keeping your child safe is our number one priority at St Regis Academy.

You can contact your child's Form Tutor, Head of Year or the Designated Safeguarding Leads if you have any concerns or questions by emailing: admin@stregisacademy.org. If it is urgent, please call the school and ask for a DSL.

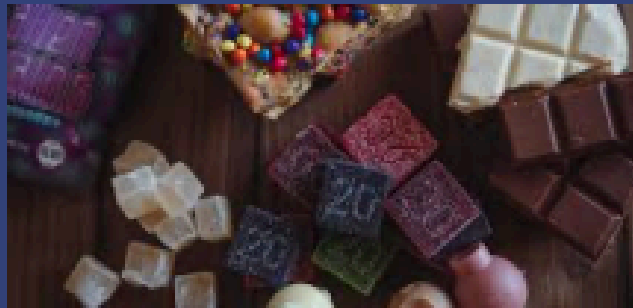


Edibles: What are they and what are the risks for young people?

Edibles refer to food items infused with tetrahydrocannabinol (THC), a mood-altering ingredient derived from cannabis.

These products come in various forms such as cakes, sweets, chocolate, soft drinks and syrups. Unlike traditional cannabis, edibles do not have a distinct smell, making it challenging to detect their THC content. Furthermore, they may contain other illicit substances.

The packaging of these products is often appealing to young individuals, with some being marketed as 'gummies' to attract children.



Effects of edibles:

Consumption of THC through edibles can lead to altered perception, dizziness, slurred speech, heart palpitations, nausea and vomiting. Regular users of edibles may also face challenges like poor concentration and depression, among other symptoms, which can adversely affect mental health.

Availability of edibles to young people:

Edibles can be conveniently purchased online and delivered to a specified address. Some drug dealers have started promoting these products on social media platforms like Instagram, TikTok and Snapchat.

App Focus: Reddit

Reddit serves as a platform where users can engage with like-minded individuals within various communities. It acts as a social news site for discussing current events, accessible both as a website and an app.

Risks linked to Reddit:

- Users have the ability to form 'subreddits' focused on diverse interests, yet adults with unknown intentions can create communities that might appeal to young users.
- User-generated content could expose children to potential grooming risks.
- Due to minimal moderation on Reddit, there is a prevalence of inappropriate content.



Age

Restriction: 13

Tips for ensuring your child's safety on Reddit:

- Wait until your child is 13 years old before allowing them to use Reddit and ensure they provide their real age on their profile.
- Assist them in selecting suitable subreddits to follow and verify their appropriateness.
- Familiarise yourself with Reddit's functionality to assist and guide your child effectively.
- Adjust the message privacy setting to 'Whitelisted' to restrict messaging to approved contacts only.
- Turn off adult content in the feed settings for added protection.



From the Chaplain...

I remember leaving my purse on a bus once. I remember my panic when I realised what I had done. When I found that the bus was still in the depot and it hadn't yet left on its next journey I raced over to explain (in my best Slovak) to the driver what had happened. You can imagine my relief to find my purse still on the seat where I had been sitting, because it doesn't always turn out that way, does it? And however much relief I felt on finding my purse again was bound up in the dread of having to potentially cancel cards and find the cash for my onward journey rather than any personal attachment to it. The panic when we temporarily lost my little brother (aged about three) on Barmouth beach was another thing altogether.

When Jesus told the story of the lost sheep, he described a shepherd who knew each sheep by name and who cared deeply for each one. He wasn't talking about a product with a profit margin allowing for acceptable but inconvenient loss, he was talking about individual characters who were loved and would be missed for who they were. This shepherd, he said, would leave the ninety-nine other sheep safe in the fold while he went searching high and low, in ditches and marshes, in rocky places and thorny places, for the one who was lost and alone. And his joy on finding this sheep would be incredible; he would want to tell everyone he knew and celebrate with them.

Jesus point was that there is nobody, no matter how far we might have strayed from God's love, nobody who is beyond his care. And in fact, the more lost we might be, the more distant we might find ourselves from his ways, the greater his sense of loss and the more joyful he will be at reconnecting with us. So what does this mean for us as his shepherds and his representatives in this school and in our communities? What does it mean for the way we treat those who persist in getting themselves stuck and in trouble and who persistently find themselves in need of a helping hand? If you have never seen this clip, you might like to watch it now! <https://www.youtube.com/watch?v=T-Wc8vluyp0>

It struck me once that in this story, and in farming, there is no blame apportioned to the lost sheep. Indeed, it is in the sheep's nature to wander off and to get stuck: that's what sheep do. True, they might then turn around and cry out for help... but there's no guarantee they won't get stuck again tomorrow. And I wonder, is that perhaps how God sees us? Let's thank him for his never ending patience, understanding and compassion and pray that we might develop a little more of the same for those we meet with in our lives. Amen

